



OVERVIEW

Captaris Workflow and Microsoft Great Plains

Captaris Workflow Combines with Microsoft Business Solution Platforms to Extend Financial and ERP Functionality with Workflow and Business Process Automation Capabilities

CAPTARIS WORKFLOW OVERVIEW

Out-of-the-box Functionality - ships with predefined, workflows that can be easily customized to accommodate an organization's business rules (i.e., Human Resources, Purchasing and Ad Hoc workflow)

Empowers Information Workers - allows anywhere, anytime, any device access

ROI and TCO - delivers measurable Return on Investment (ROI) and a lower Total Cost of Ownership (TCO) compared to other accounting and Enterprise Resource Planning (ERP) Solutions

Flexibility - customers have the option of using powerful wizards to design and deploy financial or other business related workflows. Migration to the fully Integrated Design Environment (IDE) allows for the automation of any business process

Integrate and Extend - designed to easily integrate with Microsoft Business Solution Servers, other Microsoft Server Platforms and Line of Business Applications, to extend product functionality and leverage the current IT investment

Seamless Integration - full read/write capability depending upon the type of business process that is being automated

BENEFITS

Visual Interface - provides rapid adoption with a wizard interface for Information Workers and an intuitive IDE with Visual Studio .NET layout and consistency for workflow developers

Proto-types to Deliver a Business Case - easy to demonstrate to decision-makers that the Captaris Rapid Process Justification can assist you in accurately projecting ROI and in building a full ERP business case

KEY DIFFERENTIATORS

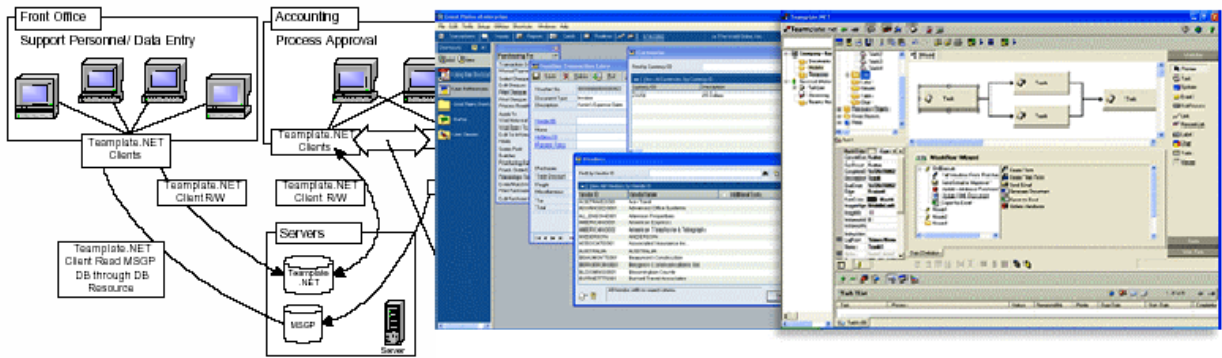
Pure .NET Technology - developed using Visual Studio .NET, C# and XML Web Services

Business Solutions Integration - Captaris is a Microsoft Great Plains Solution Provider and has a strong relationship with the Microsoft Business Solutions Teams

Ease-of-use - combines robust functionality with ease-of-use for Information Workers, Designers, Managers and Administrators

FEATURES AND INTEGRATION

- Captaris Workflow interfaces through eConnect to Great Plains. It can also integrate directly at the database level using SQL and ADO.NET.
- Captaris Workflow interfaces directly with Solomon through SQL or ADO.NET.
- Captaris Workflow will allow for direct XML interfaces in future Microsoft Great Plains Product Releases.
- Captaris Workflow Microsoft Great Plains Custom Actions significantly reduce or eliminate the requirement for coding.
- Captaris Workflow, working in interaction with Microsoft Great Plains and BizTalk Servers, provides an enhanced workflow enabled solution designed to manage and control complex business processes.
- Captaris Workflow extends Great Plains data to "non-accounting" Information Workers.
- Captaris Workflow allows workflows to be "triggered" based on events within the Microsoft Great Plains Database (i.e., credit limit exceeded or low inventory).
- Captaris Workflow allows for the design and deployment of customer specific customizations.



FOR MORE INFORMATION

Captaris Business Information Delivery solutions help organizations of all sizes automate the information and document flow throughout the information lifecycle (capture, process, archive, deliver). With a comprehensive suite of software and services, Captaris helps organizations to grow revenues and increase profits while meeting compliance goals. Through a global distribution network of leading enterprise technology partners, Captaris has installed more than 90,000 systems in 95 countries in companies of all sizes, including the entire Fortune 100. For more information, visit www.captaris.com or call +1.800.443.0806.

©2005 Captaris. All rights reserved. No part of this publication may be reproduced, transmitted, transcribed, stored in a retrieval system, or translated into any language in any form by any means without the written permission of Captaris. Captaris products Alchemy, Interchange, RightFax and Captaris Workflow are trademarks of Captaris. All other company, brand and product names are the property and/or trademarks of their respective companies. MC0010086 RB0405